

Inptools Manual

Steffen Macke

Inptools Manual

Steffen Macke

Publication date \$Date: 2011-10-08\$

Copyright © 2008, 2009, 2011 Steffen Macke

Permission is granted to copy, distribute and/or modify this document under the terms of the GNU Free Documentation License, Version 1.2 or any later version published by the Free Software Foundation; with no Invariant Sections, no Front-Cover Texts, and no Back-Cover Texts. A copy of the license is available from the Free Software Foundation (<http://www.gnu.org>).

Table of Contents

General	1
1. Introduction	1
1.1. What's New?	1
1.1.1. Version 1.0.0	1
1.1.2. Version 0.2.2	1
1.1.3. Version 0.2.0	1
1.1.4. Version 0.1.0	1
2. Requirements	1
3. Installation	1
3.1. Windows Installation	1
3.2. Linux Installation	1
Reference	3
1. Usage	3
1.1. Windows Explorer Integration	3
1.1.1. Open INP file with EPANET	3
1.1.2. Create report in German	3
1.1.3. Project from GK3 to WGS84	4
1.1.4. Create CSV result files	4
1.1.5. Create binary result file	4
1.2. Commandline Usage	4
1.2.1. inp2shp	4
1.2.2. inproj	4
1.2.3. epanet2l	4
1.2.4. epanet2csv	4
2. Troubleshooting and Support	5
3. Development	5
3.1. Release Process	5
3.2. Coding style	5
4. License	5
4.1. Shapelib License	5
4.2. PROJ.4 License	6
4.3. Gettext License	6
Index	8

General

1. Introduction

Inptools provides functionality to process EPANET INP files in various ways.

Inptools is available from epanet.de/inptools .

This manual describes *Inptools* version 1.0.0.

1.1. What's New?

A summary of changes.

1.1.1. Version 1.0.0

- EPANET 2.0.0.12 along with the documentation were added to the Windows installer.
- The Windows version requires Windows 7 or higher.
- Improved Windows explorer integration. Double click on *.net and *.inp files opens them in epanet2w.

1.1.2. Version 0.2.2

- The inp2shp tool was added.

1.1.3. Version 0.2.0

- New functions have been added to the Windows Explorer context menu: "Create CSV file", "Create binary result file", "Help"

The epanet2csv tool was added.

1.1.4. Version 0.1.0

- The first public release.

2. Requirements

Linux or Windows (7 or higher) are required in order to use the *Inptools* .

Inptools 0.2.3 is the last version that supports earlier Windows versions.

3. Installation

How to install *Inptools* .

3.1. Windows Installation

How to install *Inptools* on Windows.

Download the installer from epanet.de/inptools and execute it.

3.2. Linux Installation

How to install *Inptools* on computers running the Linux operating system

Download the RPM package from epanet.de/inptools and install it.

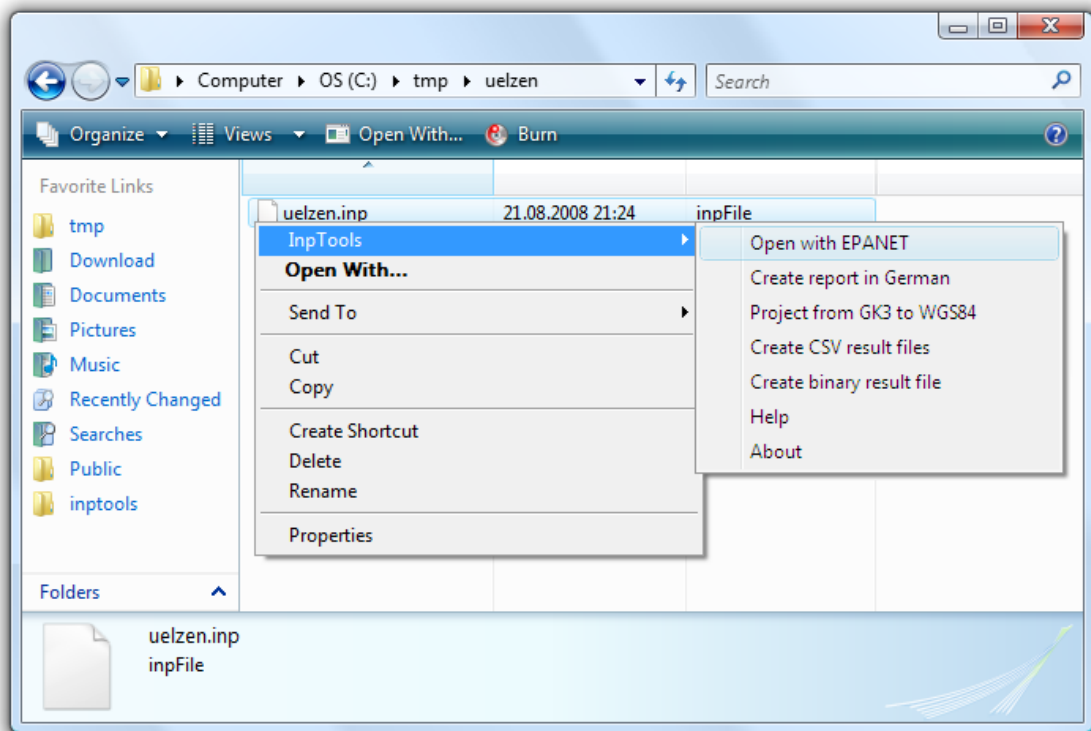
Reference

1. Usage

Inptools can be used in Windows Explorer or from the commandline.

Inptools adds a context menu to Windows Explorer that can be activated by right-clicking on *.inp files.

1.1. Windows Explorer Integration



Windows Explorer Integration

To access Inptools, do the following: Open Windows Explorer.

Navigate to an INP files.

Right-click on the INP file.

Select the Inptools menu.

1.1.1. Open INP file with EPANET

Chosen Inptools->Open with EPANET will open the selected INP file in **epanet2w** for interactive editing.

This option is only available if EPANET is installed.

1.1.2. Create report in German

Choosing Inptools->Create report in German will create a hydraulic analysis report in German language from the selected INP file.

1.1.3. Project from GK3 to WGS84

Choosing Inptools->Project from GK3 to WGS84 will convert (projects) the selected INP file with Gauß-Krüger coordinates (GK3) into a new INP file with geographic (WGS84) coordinates.

1.1.4. Create CSV result files

Choosing Inptools->Create CSV result files will create two CSV files with hydraulic analysis results. One file will contain node results and the other will contain link results.

1.1.5. Create binary result file

Choosing Inptools->Create binary result file will create a hydraulic analysis report along with a binary result file. This file can be further processed e.g. with the commandline tool **epanet2csv**.

1.2. Commandline Usage

The inptools package contains several commandline tools.

Note

The use of the commandline tools is optional for Windows users. If you are not familiar with commandline interfaces, please stick to the Windows Explorer context menu (Section 1.1, “Windows Explorer Integration”).

1.2.1. inp2shp

The inp2shp command converts an INP file into a set of shapefiles.

1.2.1.1. Synopsis

```
inp2shp infile reportfile junction_shapefile pipe_shapefile pump_shapefile rese
```

1.2.2. inpproj

The inpproj command converts (projects) an INP file with Gauß-Krüger coordinates (GK3) into a new INP file with geographic (WGS84) coordinates.

1.2.2.1. Synopsis

```
inpproj inputfile outputfile
```

1.2.3. epanet2l

epanet2l is a modified (localized) version of **epanet2d** that allows to generate report files in German.

The LANG environment variable can be used to determine in which language command should operate.

1.2.3.1. Synopsis

```
epanet2l infile reportfile [binaryresultfile]
```

1.2.4. epanet2csv

epanet2csv converts an EPANET binary result file into two CSV files. CSV files can be read by spreadsheet software like OpenOffice Calc or Excel, relational database software like PostgreSQL or MySQL and GIS software.

1.2.4.1. Synopsis

```
epanet2csv binaryresultfile nodes.csv links.csv
```

2. Troubleshooting and Support

Please report any problems through the epanet.de support form:

<http://epanet.de/en/support.php>

3. Development

Most of the source code is plain C and should compile with virtually any C compiler.

The C++ code can be compiled using MinGW.

3.1. Release Process

Update the version number in `configure.in`, `installer/win32/inptools-setup.nsi`, `doc/de/inptools.xml`, the MSVC project and `doc/en/inptools.xml`.

3.2. Coding style

K&R style with 8 character indents shall be used to format the code. The `indent` command can be used to format the code:

```
indent -kr -i8 epanet2csv.c
```

4. License

Inptools - Tools to work with EPANET INP files.

Copyright (C) 2001, 2008, 2009, 2011 Steffen Macke

This program is free software; you can redistribute it and/or modify it under the terms of the GNU General Public License as published by the Free Software Foundation; either version 3 of the License, or (at your option) any later version.

This program is distributed in the hope that it will be useful, but WITHOUT ANY WARRANTY; without even the implied warranty of MERCHANTABILITY or FITNESS FOR A PARTICULAR PURPOSE. See the GNU General Public License for more details.

You should have received a copy of the GNU General Public License along with this program; if not, see <http://www.gnu.org/licenses/>.

4.1. Shapelib License

The `inp2shp` and `shp2inp` commands use shapelib under the terms of the LGPL.

Copyright (c) 1999, Frank Warmerdam

This software is available under the following "MIT Style" license, or at the option of the licensee under the LGPL (see `LICENSE.LGPL`). This option is discussed in more detail in `shapelib.html`

Permission is hereby granted, free of charge, to any person obtaining a copy of this software and associated documentation files (the "Software"), to deal in the Software without restriction, including

without limitation the rights to use, copy, modify, merge, publish, distribute, sublicense, and/or sell copies of the Software, and to permit persons to whom the Software is furnished to do so, subject to the following conditions:

The above copyright notice and this permission notice shall be included in all copies or substantial portions of the Software.

THE SOFTWARE IS PROVIDED "AS IS", WITHOUT WARRANTY OF ANY KIND, EXPRESS OR IMPLIED, INCLUDING BUT NOT LIMITED TO THE WARRANTIES OF MERCHANTABILITY, FITNESS FOR A PARTICULAR PURPOSE AND NONINFRINGEMENT. IN NO EVENT SHALL THE AUTHORS OR COPYRIGHT HOLDERS BE LIABLE FOR ANY CLAIM, DAMAGES OR OTHER LIABILITY, WHETHER IN AN ACTION OF CONTRACT, TORT OR OTHERWISE, ARISING FROM, OUT OF OR IN CONNECTION WITH THE SOFTWARE OR THE USE OR OTHER DEALINGS IN THE SOFTWARE.

4.2. PROJ.4 License

The `inproj` command use the PROJ.4 cartographic projections library.

Copyright (c) 2000, Frank Warmerdam

Permission is hereby granted, free of charge, to any person obtaining a copy of this software and associated documentation files (the "Software"), to deal in the Software without restriction, including without limitation the rights to use, copy, modify, merge, publish, distribute, sublicense, and/or sell copies of the Software, and to permit persons to whom the Software is furnished to do so, subject to the following conditions:

The above copyright notice and this permission notice shall be included in all copies or substantial portions of the Software.

THE SOFTWARE IS PROVIDED "AS IS", WITHOUT WARRANTY OF ANY KIND, EXPRESS OR IMPLIED, INCLUDING BUT NOT LIMITED TO THE WARRANTIES OF MERCHANTABILITY, FITNESS FOR A PARTICULAR PURPOSE AND NONINFRINGEMENT. IN NO EVENT SHALL THE AUTHORS OR COPYRIGHT HOLDERS BE LIABLE FOR ANY CLAIM, DAMAGES OR OTHER LIABILITY, WHETHER IN AN ACTION OF CONTRACT, TORT OR OTHERWISE, ARISING FROM, OUT OF OR IN CONNECTION WITH THE SOFTWARE OR THE USE OR OTHER DEALINGS IN THE SOFTWARE.

4.3. Gettext License

Several Inptools commands use gettext under the terms of the LGPL.

Copyright (c) 1991 Free Software Foundation

This software is available under the following "MIT Style" license, or at the option of the licensee under the LGPL (see `LICENSE.LGPL`). This option is discussed in more detail in `shapelib.html`

Permission is hereby granted, free of charge, to any person obtaining a copy of this software and associated documentation files (the "Software"), to deal in the Software without restriction, including without limitation the rights to use, copy, modify, merge, publish, distribute, sublicense, and/or sell copies of the Software, and to permit persons to whom the Software is furnished to do so, subject to the following conditions:

The above copyright notice and this permission notice shall be included in all copies or substantial portions of the Software.

THE SOFTWARE IS PROVIDED "AS IS", WITHOUT WARRANTY OF ANY KIND, EXPRESS OR IMPLIED, INCLUDING BUT NOT LIMITED TO THE WARRANTIES OF MERCHANTABILITY, FITNESS FOR A PARTICULAR PURPOSE AND NONINFRINGEMENT. IN NO EVENT SHALL

THE AUTHORS OR COPYRIGHT HOLDERS BE LIABLE FOR ANY CLAIM, DAMAGES OR OTHER LIABILITY, WHETHER IN AN ACTION OF CONTRACT, TORT OR OTHERWISE, ARISING FROM, OUT OF OR IN CONNECTION WITH THE SOFTWARE OR THE USE OR OTHER DEALINGS IN THE SOFTWARE.

Index

B

binary, 4

C

coding, 5
commandline, 4
compiler, 5
CSV, 4

D

development, 5

E

epanet2csv, 4, 4
epanet2l, 4
epanet2w, 3
Explorer, 3

G

general, 1
German, 3
gettext, 6
GK3, 4
GPL, 5

I

indent, 5
inp2shp, 4
inpproj, 4
installation, 1
 Linux, 1
 Windows, 1
introduction, 1

L

LGPL, 5, 6
license, 1, 5, 5, 6, 6

M

MIT, 6

N

news, 1

P

PROJ.4, 6
projection, 4

R

reference, 3
release process, 5
report, 3, 4

requirements, 1
result, 4
RPM, 2

S

shapelib, 5
source, 5
style, 5
support, 5
synopsis, 4, 4, 4, 5

T

troubleshooting, 5

U

usage, 3

W

WGS84, 4
Windows, 1, 2
 Explorer, 3